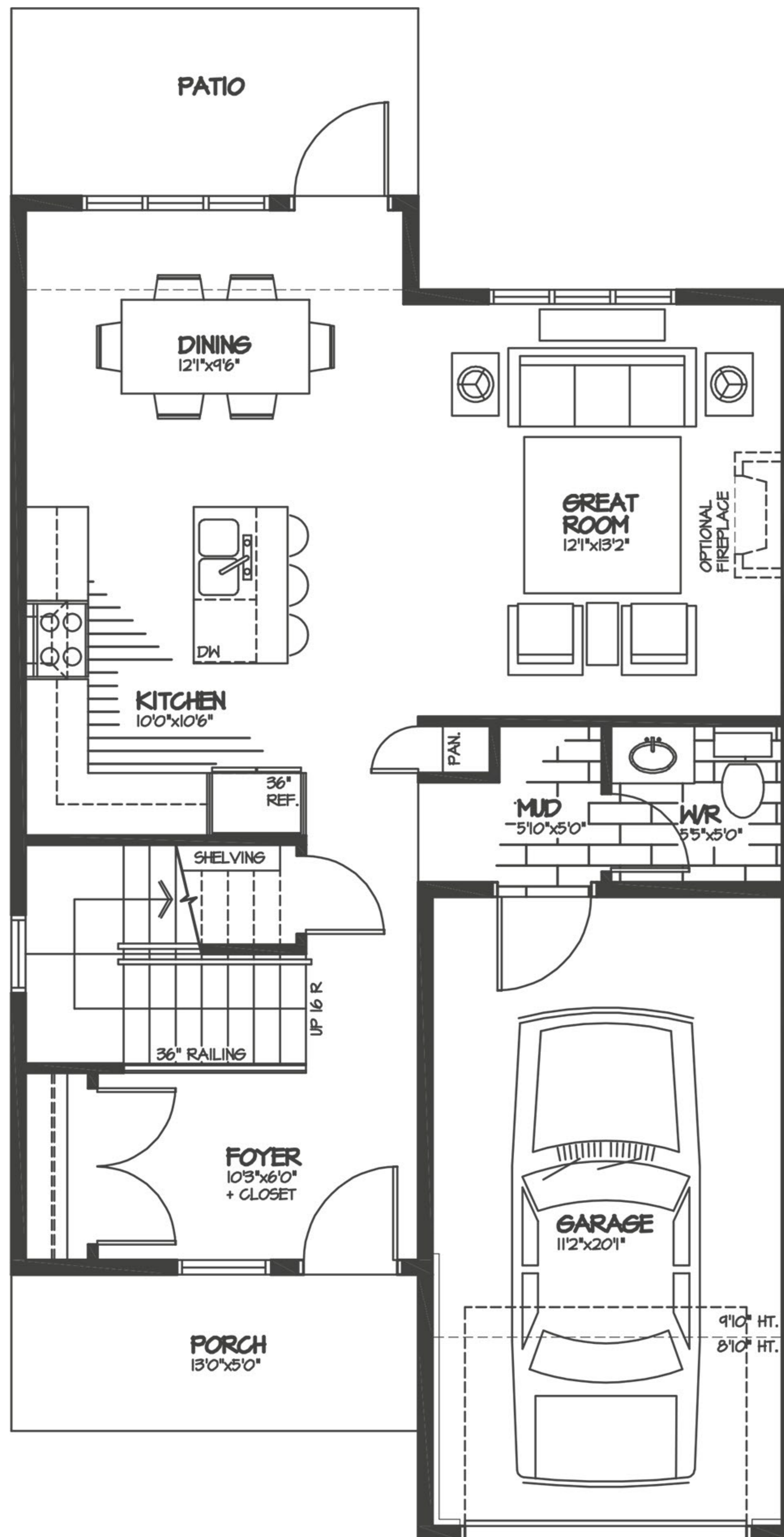
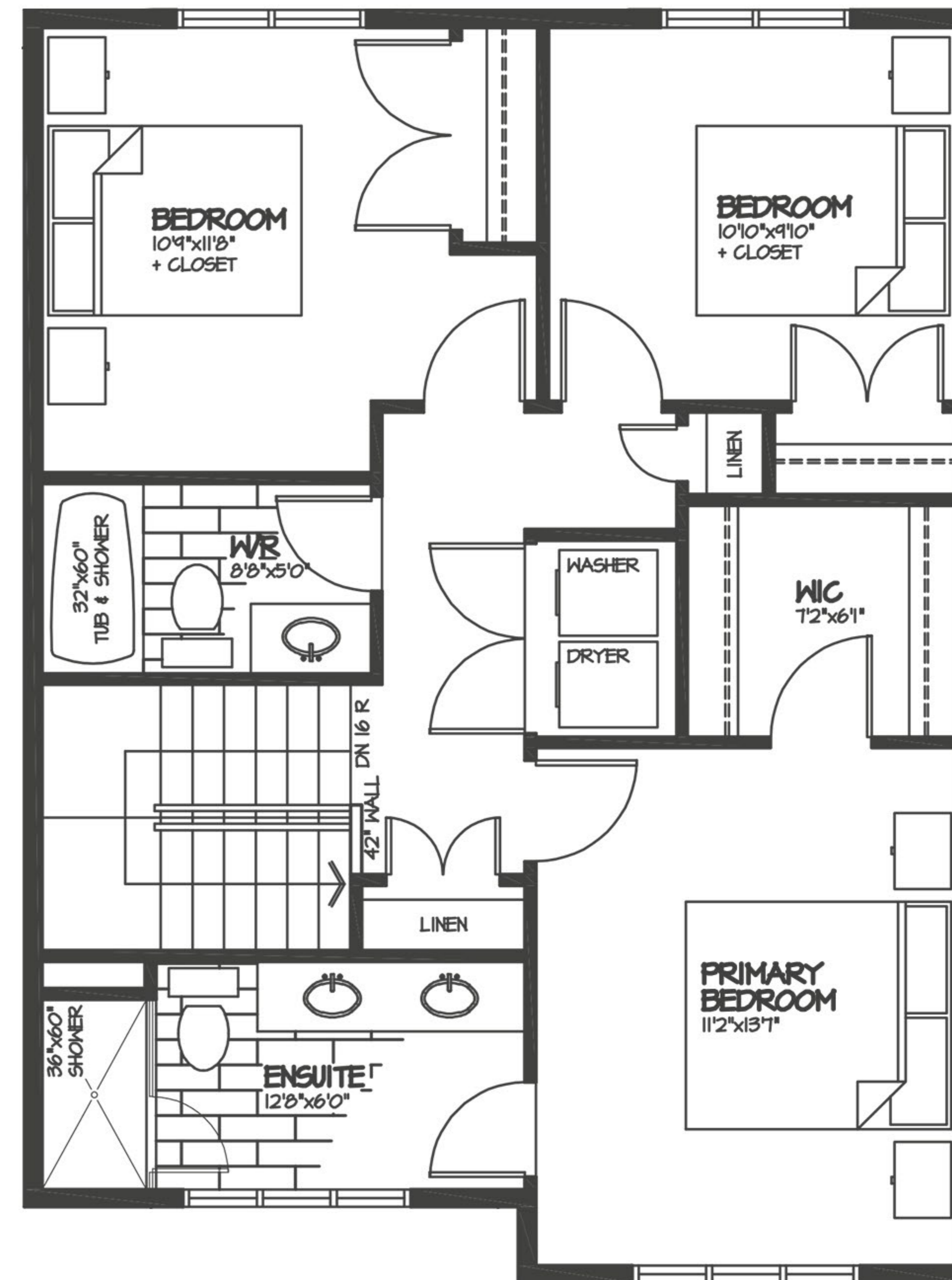


Floor Plan B - Hazelton

Total Floor Area 1437 sq. ft.



Main Floor 687 sq. ft.



Upper Floor 751 sq. ft.



This plan is published by Atlin Investments Ltd, and reserves the right to make modifications and changes to the building design, elevations, specifications, features and prices without prior notification. Decks, patios, stairs and windows may vary based on site conditions. These variances may include materials, sizes and/or locations as well as the number of steps into and out of the home. See your Sales Representative for site specific details. All dimensions are approximate and subject to change without prior notice. E.&O.E. This is not an offering for sale. Any such offering can only be made by filing of a Disclosure Statement. This is for information only!

ATLIN INVESTMENTS LTD. REALTOR